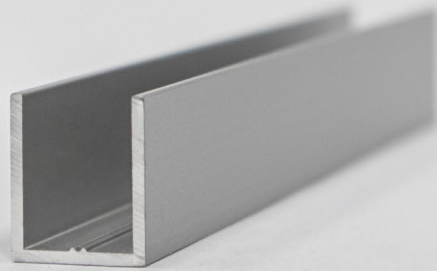
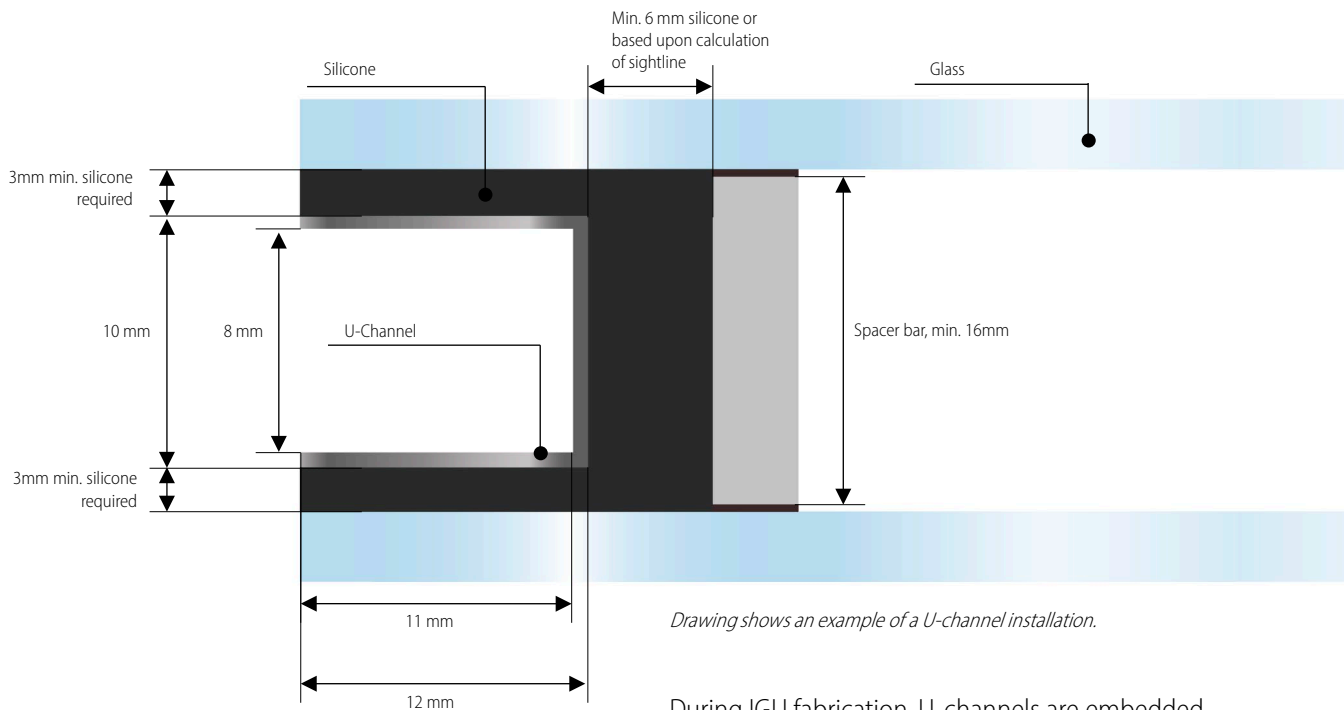


U-CHANNELS

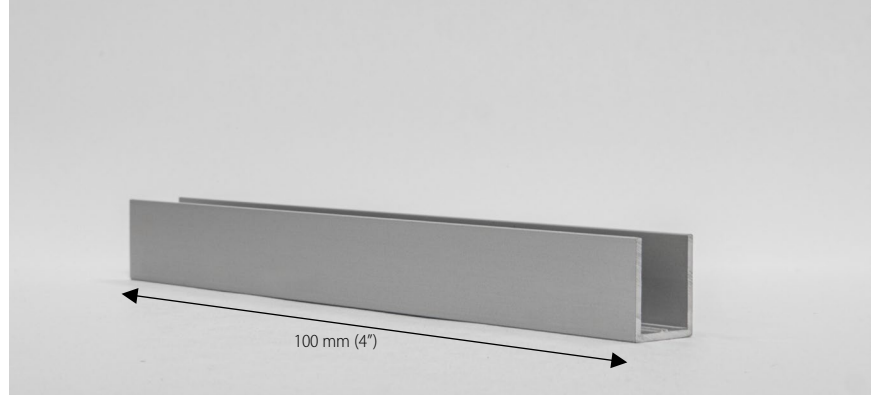


U-channels are 4" long anodized aluminum U-shaped profiles and inserted into the silicone edge of an insulated glass unit (IGU). Each piece is part of the curtain wall system and provides a precise mechanical connection point for installation in specialized façade systems.



Drawing shows an example of a U-channel installation.

During IGU fabrication, U-channels are embedded directly into the secondary silicone seal along the glass edge. This process ensures strong adhesion between the channel, glass, and sealant - creating a clean, durable edge ready for integration into the framing system.



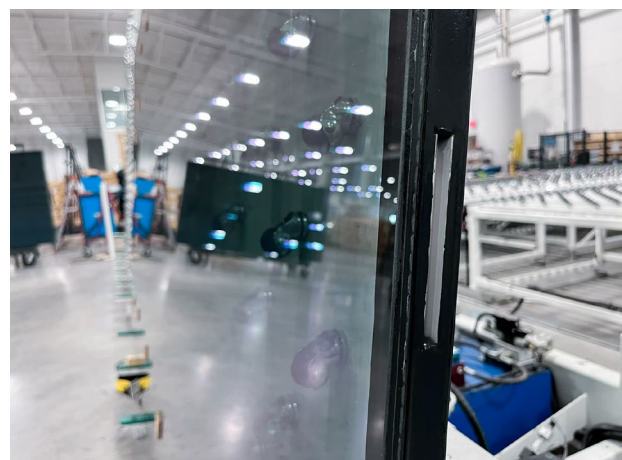
PRESS GLASS offers standard 4" long U-channels that have been tested for silicone adhesion. If U-channels are supplied by the customer, their adhesion with the silicone must be verified prior to production.

Tested systems:

- Innovation Glass VS1 System A110, A210, T110, T210 and S210
- Gutmann F50++ and F60++
- Kawneer Clearwall® Curtain Wall
- Raico THERM+ Structural Glazing SG2
- Reynaers ConceptWall 50 and ConceptWall 60

Systems with U-Channels:

- **Minimalist aesthetics:** Creates uninterrupted glass façades with minimum visible framing.
- **Structural integrity:** Ensures reliable load transfer between the glass and the support system.
- **Design flexibility:** Ideal for modern architecture in offices, universities, hospitals, and high-end residential projects.



IGCC®
Insulating Glass Certification Council

SGCC®
Safety Glazing Certification Council

VITRO CERTIFIED®
Fabricator and Laminator

GUARDIAN SELECT®
Elite Fabricator

We make every effort to ensure that the information in this publication is current as of the print date. However, because our product range is continuously evolving, available products may vary by market. Please confirm product availability with our Sales Department.

